

# 檢測報告 Test Report

報告編號 RLSHE001222700002  
Report No. RLSHE001222700002

第 1 頁 共 3 頁  
Page 1 of 3

申請單位 全科企業股份有限公司  
Applicant PANTECH TAPE CO., LTD  
地 址 32669 桃園縣楊梅市中山南路 800 巷 98 弄 8 號  
Address NO. 8, ALLEY 98, LANE 800, CHUNG-SHAN SOUTH ROAD, YANGMEI,  
TAOYUAN 32669

以下測試之樣品及樣品信息由申請者提供並確認

The following sample(s) and sample information was/were submitted and identified by/on the behalf of the client

樣品名稱 Sample Name PET 電氣絕緣膠帶 POLYESTER ELECTRICAL TAPE  
樣品型號 Part No. PT-13HF (N 黃) PT-13HF (Yellow)  
顏色 Color 黃色 Yellow  
材質 Material PET  
供應商 Supplier 全科企業股份有限公司 PANTECH TAPE CO., LTD  
製造商 Manufacturer 全科企業股份有限公司 PANTECH TAPE CO., LTD  
樣品接收日期 2012.10.23  
Sample Received Date Oct.23,2012  
樣品檢測日期 2012.10.23-2012.10.26  
Testing Period Oct.23,2012 to Oct.26,2012  
檢測要求 根據客戶要求，對所提交樣品中的氟(F)，氯(Cl)，溴(Br)，碘(I) 進行  
測試。  
Test Requested As specified by client, to test Fluorine (F), Chlorine (Cl), Bromine (Br),  
Iodine (I) in the submitted sample(s).

檢測依據和檢測結果 請參見下頁

Test Method & Test Result(s) Please refer to following page(s).

主 檢 Terna chen 審 核 Wey Zhong  
Tested by \_\_\_\_\_ Reviewed by \_\_\_\_\_  
批 准 Joy Su 日 期  
Approved by \_\_\_\_\_ Date 2012.10.26  
Joy Su  
Senior Laboratory Manager

No. 13336982

深圳市華測檢測技術股份有限公司上海分公司 上海市浦東新區新金橋路 1996 號  
Centre Testing International (Shenzhen) Co., Ltd. Shanghai Branch No.1996, New Jinqiao Road, Pudong District, Shanghai

# 檢測報告 Test Report

報告編號 RLSHE001222700002  
Report No. RLSHE001222700002

第 2 頁 共 3 頁  
Page 2 of 3

## 檢測依據 Test Method

測試項目 Tested Item(s)	測試方法 Test Method	測試儀器 Measured Equipment(s)	方法檢測限 M.D.L
氟(F) Fluorine	參考 BS EN 14582: 2007 Refer to BS EN 14582: 2007	IC	10mg/kg
氯(Cl) Chlorine	參考 BS EN 14582: 2007 Refer to BS EN 14582: 2007	IC	10mg/kg
溴(Br) Bromine	參考 BS EN 14582: 2007 Refer to BS EN 14582: 2007	IC	10mg/kg
碘(I) Iodine	參考 BS EN 14582: 2007 Refer to BS EN 14582: 2007	IC	10mg/kg

## 檢測結果 Test Result(s)

測試項目 Tested Item(s)	結果 Result
<b>鹵素 Halogen</b>	
氟 Fluorine (F)	N.D.
氯 Chlorine (Cl)	131 mg/kg
溴 Bromine (Br)	N.D.
碘 Iodine (I)	N.D.

測試樣品/部位描述 黃色膠帶

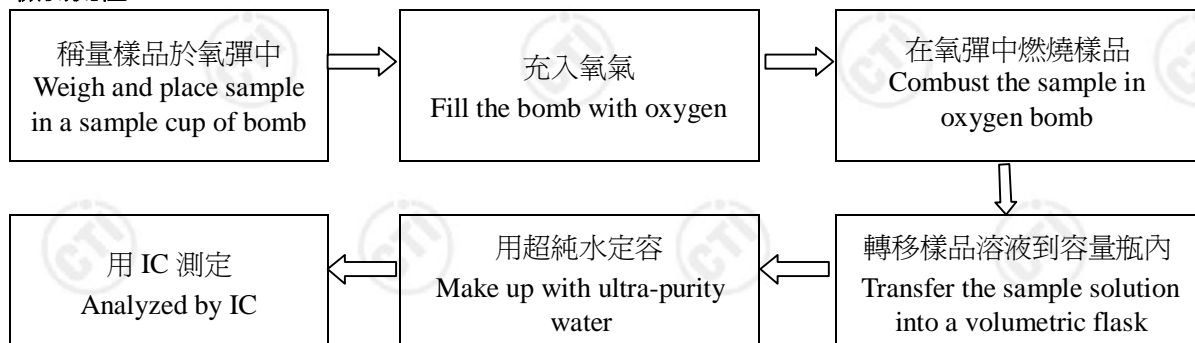
Tested Sample/Part Description Yellow adhesive tape

注： -N.D. = 未檢出 (小於方法檢測限). -mg/kg=ppm=百萬分之幾.

Note : -M.D.L=Method Detection limit

-N.D. = Not Detected (<M.D.L). -mg/kg= ppm =parts per million.

## 檢測流程 Test Process

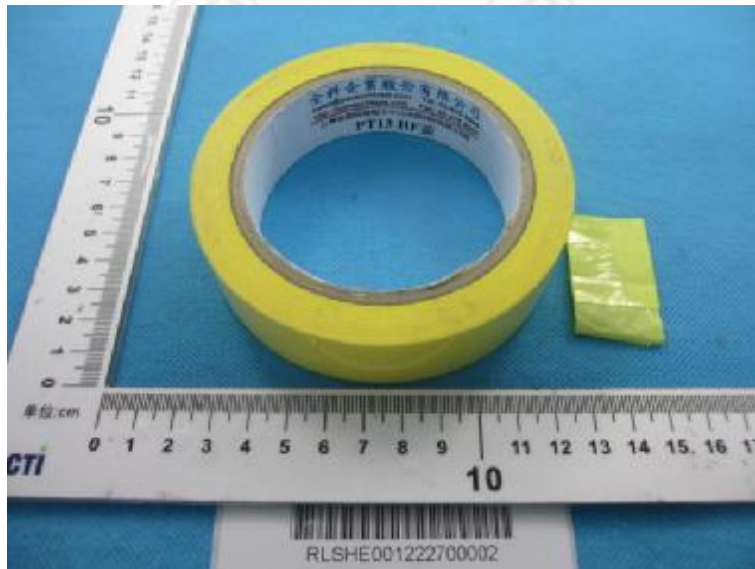


# 檢測報告 Test Report

報告編號 RLSHE001222700002  
Report No. RLSHE001222700002

第 3 頁 共 3 頁  
Page 3 of 3

## 樣品照片 Photo of the sample



\*\*\* 報告結束 \*\*\*

\*\*\*End of report \*\*\*

檢測報告無批准人簽字及“報告專用章”無效，本報告檢測結果僅對受測樣品負責。未經 CTI 書面同意，不得部分複製本報告。

The test report is effective only with both signature and specialized stamp. The result(s) shown in this report refer only to the sample(s) tested. Without written approval of CTI, this report can't be reproduced except in full.