

檢測報告 Test Report

報告編號 RLSHF001331290001
Report No. RLSHF001331290001

第 1 頁 共 8 頁
Page 1 of 8

申請單位 全科企業股份有限公司

Applicant PANTECH TAPE CO., LTD

地址 32669 桃園縣楊梅市中山南路 800 巷 98 弄 8 號

Address NO. 8, ALLEY 98, LANE 800, CHUNG-SHAN SOUTH ROAD, YANGMEI, TAOYUAN 32669

以下測試之樣品及樣品信息由申請者提供並確認

The following sample(s) and sample information was/were submitted and identified by/on the behalf of the client

樣品名稱 Sample Name 彩虹膠帶 POLYESTER DECORATION TAPE

樣品型號 Part No. PT-90 金/PT-90 銀/PT-90 半銀
PT-90 Gold/PT-90 Silver/PT-90 transparent silver

材質 Material PET

顏色 Color 金色/銀色/半銀 Gold/Silver/transparent silver

供應商 Supplier 全科企業股份有限公司 PANTECH TAPE CO., LTD

製造商 Manufacturer 全科企業股份有限公司 PANTECH TAPE CO., LTD

樣品接收日期 2013.01.08

Sample Received Date Jan.8,2013

樣品檢測日期 2013.01.08-2013.01.11

Testing Period Jan.8,2013 to Jan.11,2013

檢測要求 根據客戶要求, 對所提交樣品中的鉛(Pb), 鎘(Cd), 汞(Hg), 六價鉻(Cr(VI)), 多溴聯苯(PBBs), 多溴二苯醚(PBDEs), 氟(F), 氯(Cl), 溴(Br), 碘(I)進行混合測試。

Test Requested As specified by client, to test Lead(Pb), Cadmium(Cd), Mercury(Hg), Hexavalent Chromium (Cr(VI)), Polybrominated Biphenyls (PBBs), Polybrominated Diphenyl Ethers (PBDEs), Fluorine (F), Chlorine (Cl), Bromine (Br), Iodine (I) in the submitted sample(s) and it was tested as mixture.

檢測依據和檢測結果 請參見下頁

Test Method & Test Result(s) Please refer to following page(s).

主 檢

審 核

Tested by

Verna Chen

Reviewed by

Wrey Zhong

批 准

日 期

Approved by

Joy Su

Date

2013.01.11

Joy Su

Senior Laboratory Manager

No. 12488718

深圳市華測檢測技術股份有限公司上海分公司

上海市浦東新區新金橋路 1996 號

Centre Testing International (Shenzhen) Co., Ltd. Shanghai Branch

No.1996, New Jinqiao Road, Pudong District, Shanghai

檢測報告

Test Report

報告編號 RLSHF001331290001
Report No. RLSHF001331290001

第 2 頁 共 8 頁
Page 2 of 8

檢測依據 Test Method

測試項目 Tested Item(s)	測試方法 Test Method	測試儀器 Measured Equipment(s)	方法檢測限 M.D.L.
鉛(Pb) Lead (Pb)	IEC 62321:2008 Ed.1 Sec.8	ICP-OES	2mg/kg
鎘(Cd) Cadmium (Cd)	IEC 62321:2008 Ed.1 Sec.8	ICP-OES	2mg/kg
汞(Hg) Mercury (Hg)	IEC 62321:2008 Ed.1 Sec.7	ICP-OES	2mg/kg
六價鉻(Cr(VI)) Hexavalent Chromium (Cr(VI))	IEC 62321:2008 Ed.1 Annex C	UV-Vis	2mg/kg
多溴聯苯(PBBs) Polybrominated Biphenyls (PBBs)	IEC 62321:2008 Ed.1 Annex A	GC-MS	5 mg/kg
多溴二苯醚(PBDEs) Polybrominated Diphenyl Ethers (PBDEs)	IEC 62321:2008 Ed.1 Annex A	GC-MS	5 mg/kg
氟(F) Fluorine	參考 BS EN 14582: 2007 Refer to BS EN 14582: 2007	IC	10mg/kg
氯(Cl) Chlorine	參考 BS EN 14582: 2007 Refer to BS EN 14582: 2007	IC	10mg/kg
溴(Br) Bromine	參考 BS EN 14582: 2007 Refer to BS EN 14582: 2007	IC	10mg/kg
碘(I) Iodine	參考 BS EN 14582: 2007 Refer to BS EN 14582: 2007	IC	10mg/kg

檢測報告

Test Report

報告編號 RLSHF001331290001
Report No. RLSHF001331290001

第 3 頁 共 8 頁
Page 3 of 8

檢測結果 Test Result(s)

測試項目 Tested Item(s)	結果 Result
鉛 Lead (Pb)	N.D.
鎘 Cadmium (Cd)	N.D.
汞 Mercury (Hg)	N.D.
六價鉻 Hexavalent Chromium (Cr(VI))	N.D.

測試項目 Tested Item(s)	結果 Result
多溴聯苯 Polybrominated Biphenyls(PBBs)	
一溴聯苯 Monobromodiphenyl	N.D.
二溴聯苯 Dibromobiphenyl	N.D.
三溴聯苯 Tribromobiphenyl	N.D.
四溴聯苯 Tetrabromobiphenyl	N.D.
五溴聯苯 Pentabromobiphenyl	N.D.
六溴聯苯 Hexabromobiphenyl	N.D.
七溴聯苯 Heptabromobiphenyl	N.D.
八溴聯苯 Octabromobiphenyl	N.D.
九溴聯苯 Nonabromobiphenyl	N.D.
十溴聯苯 Decabromobiphenyl	N.D.

檢測報告

Test Report

報告編號 RLSHF001331290001
Report No. RLSHF001331290001

第 4 頁 共 8 頁
Page 4 of 8

測試項目 Tested Item(s)	結果 Result
多溴二苯醚 Polybrominated Diphenyl Ethers(PBDEs)	
一溴二苯醚 Monobromodiphenyl ether	N.D.
二溴二苯醚 Dibromobiphenyl ether	N.D.
三溴二苯醚 Tribromobiphenyl ether	N.D.
四溴二苯醚 Tetrabromobiphenyl ether	N.D.
五溴二苯醚 Pentabromobiphenyl ether	N.D.
六溴二苯醚 Hexabromobiphenyl ether	N.D.
七溴二苯醚 Heptabromobiphenyl ether	N.D.
八溴二苯醚 Octabromobiphenyl ether	N.D.
九溴二苯醚 Nonabromobiphenyl ether	N.D.
十溴二苯醚 Decabromobiphenyl ether	N.D.

測試項目 Tested Item(s)	結果 Result
鹵素 Halogen	
氟 Fluorine (F)	N.D.
氯 Chlorine (Cl)	N.D.
溴 Bromine (Br)	N.D.
碘 Iodine (I)	N.D.

測試樣品/部位描述 混測,金色,銀色膠帶

Tested Sample/Part Description Mixed test, golden, silvery adhesive tape

注釋：對於檢測鉛, 鎘, 汞之樣品已完全溶解。

-N.D. = 未檢出 (小於方法檢測限).

-mg/kg=ppm=百萬分之幾.

Note : The sample had been dissolved totally tested for Lead, Cadmium, Mercury.

-M.D.L. = Method Detection Limit

-N.D. = Not Detected (<M.D.L.).

-mg/kg= ppm =parts per million.

檢測報告

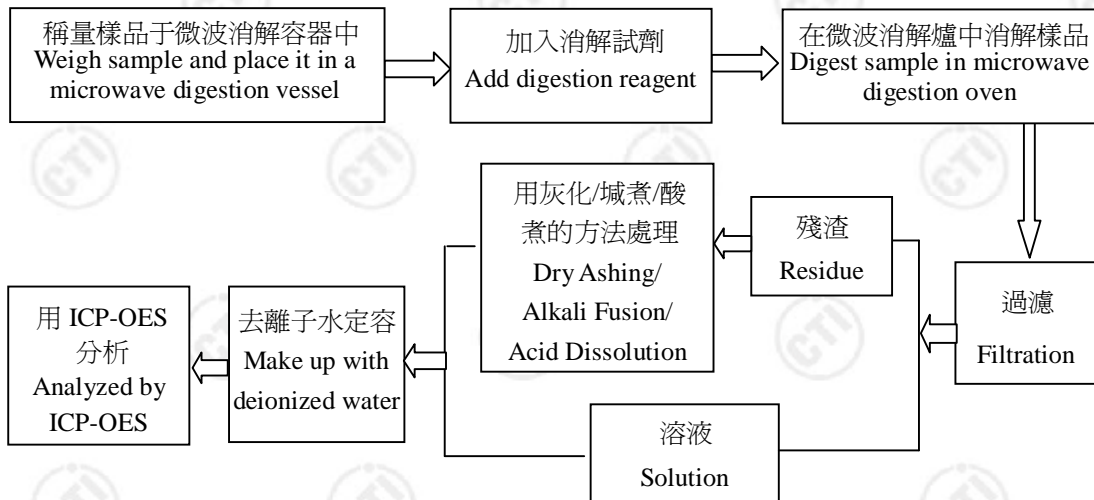
Test Report

報告編號 RLSHF001331290001
Report No. RLSHF001331290001

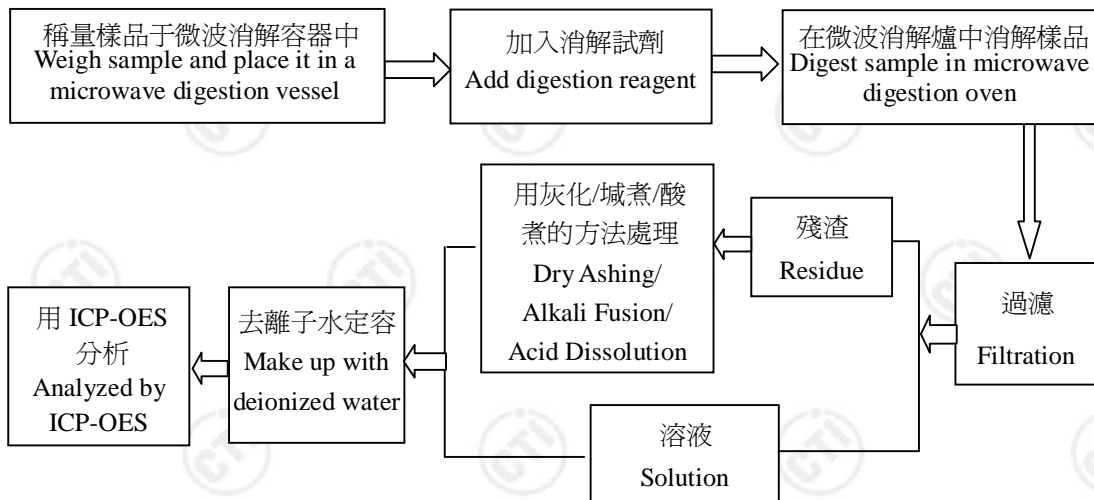
第 5 頁 共 8 頁
Page 5 of 8

檢測流程 Test Process

1. 鉛(Pb)，鎘(Cd) Lead(Pb), Cadmium(Cd)



2. 汞(Hg) Mercury(Hg)



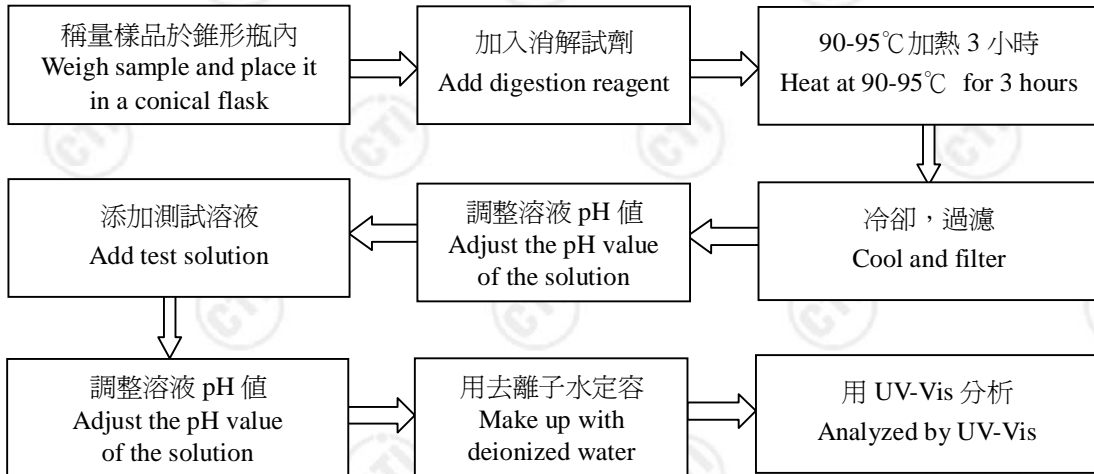
檢測報告

Test Report

報告編號 RLSHF001331290001
Report No. RLSHF001331290001

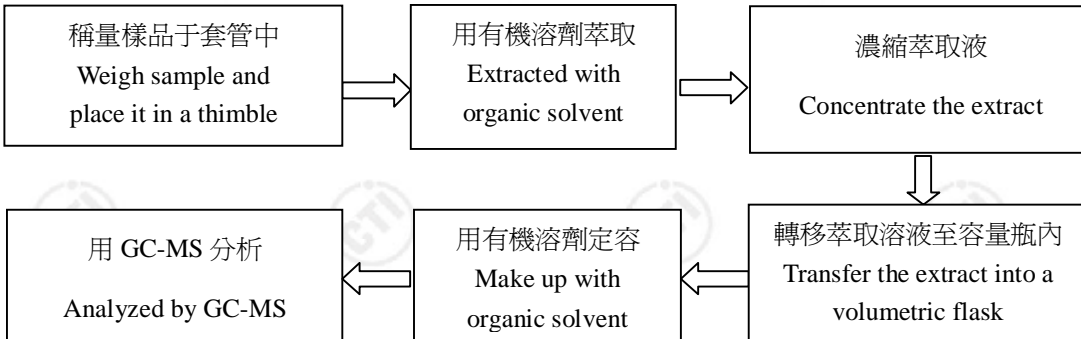
第 6 頁 共 8 頁
Page 6 of 8

3. 六價鉻(Cr(VI)) Hexavalent Chromium (Cr(VI))



4. 多溴聯苯(PBBs)，多溴二苯醚(PBDEs)

Polybrominated Biphenyls (PBBs), Polybrominated Diphenyl Ethers (PBDEs)



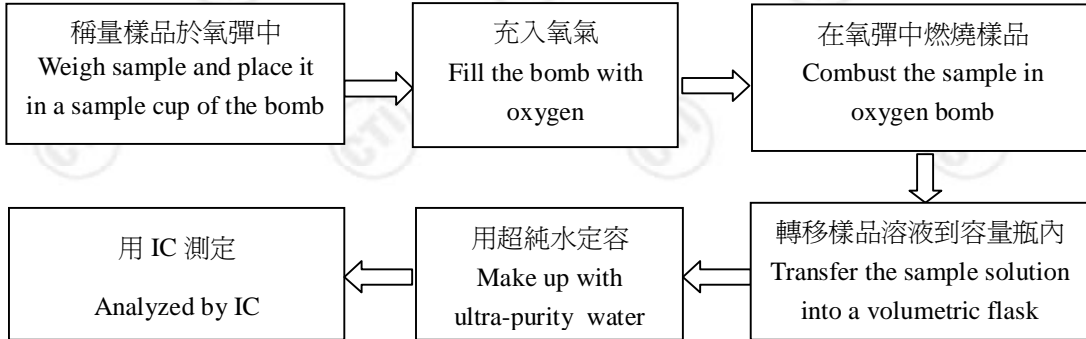
檢測報告

Test Report

報告編號 RLSHF001331290001
Report No. RLSHF001331290001

第 7 頁 共 8 頁
Page 7 of 8

5. 氟(F), 氯(Cl), 溴(Br), 碘(I) Fluorine (F), Chlorine (Cl), Bromine (Br), Iodine (I)

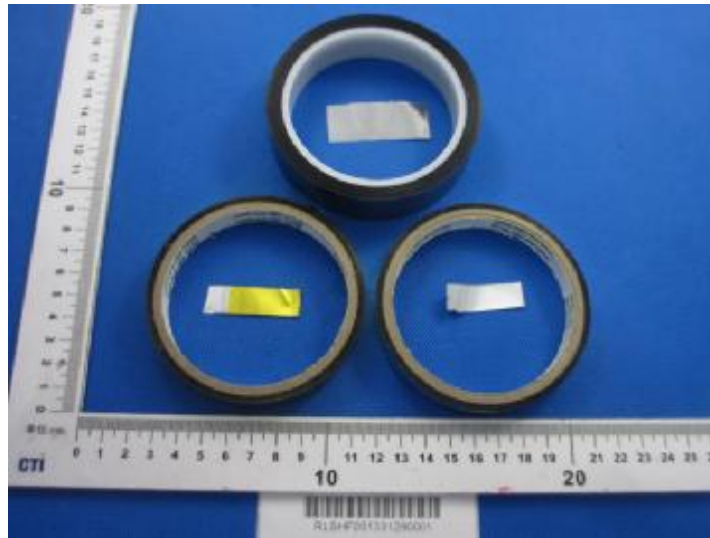


檢測報告 Test Report

報告編號 RLSHF001331290001
Report No. RLSHF001331290001

第 8 頁 共 8 頁
Page 8 of 8

樣品照片
Photo of the sample



*** 報告結束 ***

***End of report ***

檢測報告無批准人簽字及“報告專用章”無效，本報告檢測結果僅對受測樣品負責。未經 CTI 書面同意，不得部分複製本報告。

The test report is effective only with both signature and specialized stamp. The result(s) shown in this report refer only to the sample(s) tested. Without written approval of CTI, this report can't be reproduced except in full.